



MONTHLY MEMBERSHIP PROGRESS REPORT

Results as of: 6/30/2015

Multiple District 27

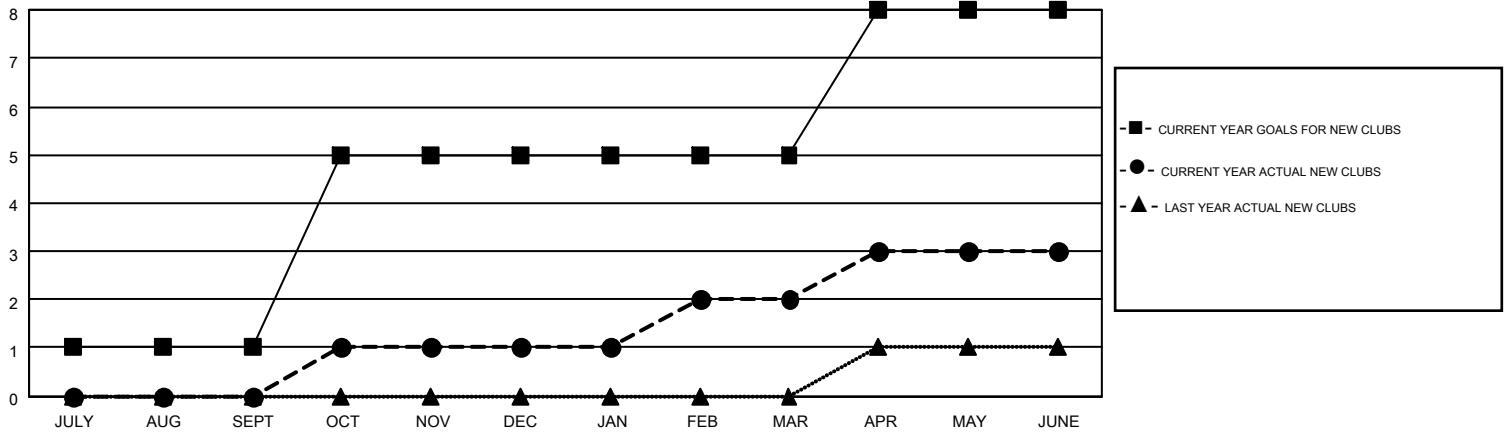
LOCATION: WISCONSIN

GMT: JUDY HANKOM

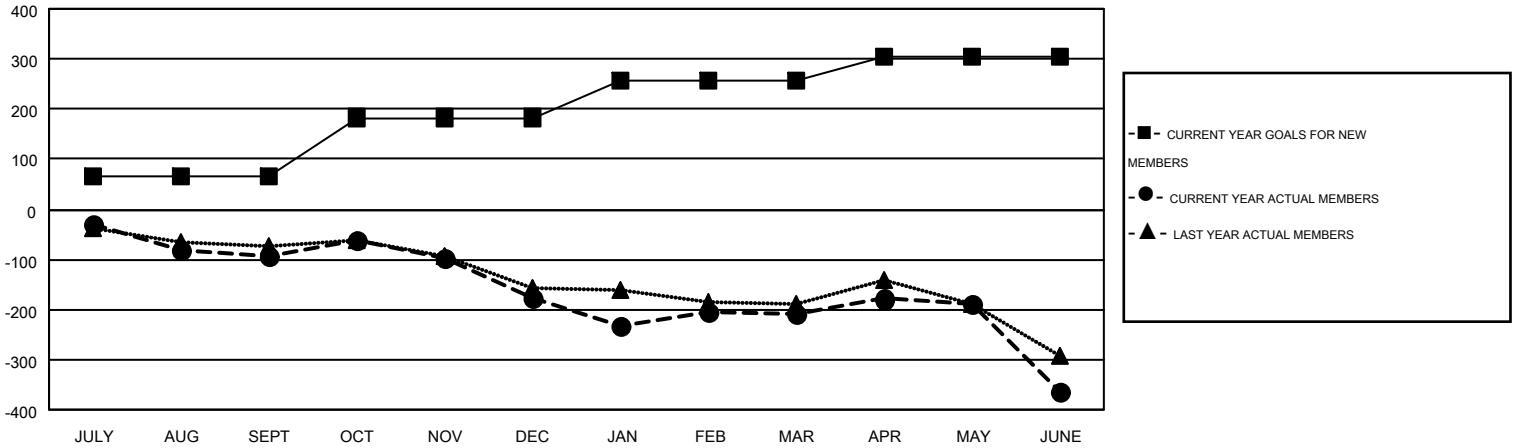
GMT CA 1

Clubs					Members				
RESULTS FOR 2014-2015					RESULTS FOR 2014-2015				
QUARTER	NEW CLUB GOAL	NEW CLUBS	DROPPED CLUBS	NET GAIN/LOSS	QUARTER	NEW MEMBER GOAL	CHARTER AND NEW MEMBERS ADDED	DROPPED MEMBERS	NET GAIN/LOSS
JULY/AUG/SEPT	1	0	4	-4	JULY/AUG/SEPT	64	349	443	-94
OCT/NOV/DEC	4	1	1	0	OCT/NOV/DEC	119	369	451	-82
JAN/FEB/MAR	0	1	3	-2	JAN/FEB/MAR	75	418	451	-33
APR/MAY/JUNE	3	1	2	-1	APR/MAY/JUNE	47	410	566	-156

GOALS AND ACTUAL NEW CLUBS CUMULATIVE



GOALS AND ACTUAL MEMBERS CUMULATIVE



DROPPED CLUBS: 10	375 CLUBS OF 545 ADDED 1 OR MORE NEW MEMBERS	<u>GENDER DISTRIBUTION</u>	
		MALE	14,516 (79.70%)
<u>DROPPED MEMBERS</u>		FEMALE	3,697 (20.30%)
DECEASED	226	CLICK HERE FOR HEALTH ASSESSMENT DATA	
CLUB CANCELLED	38		
OTHER	1,647		
TOTAL	1,911		
		FAMILY UNIT MEMBERS	3,148
		HEAD OF HOUSEHOLD	1,546
		NON-HEAD OF HOUSEHOLD	1,602